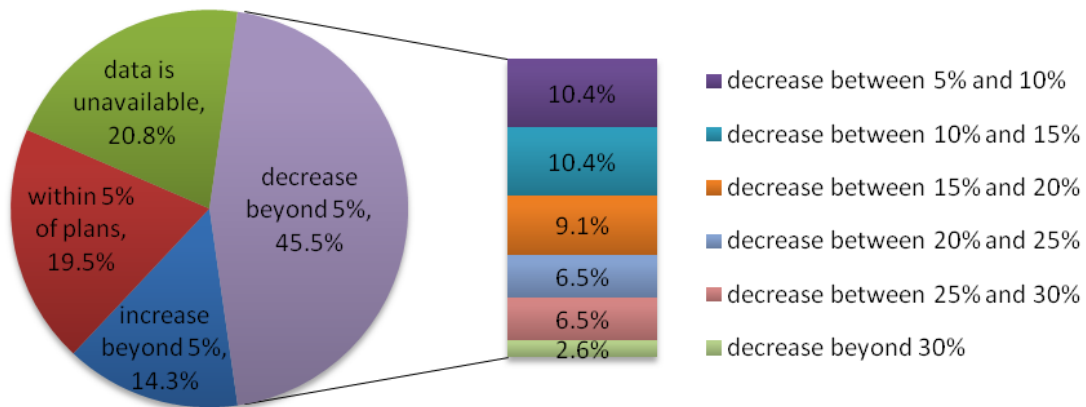


## Ticket Sales

The 91 respondents who completed the survey were asked the following question:

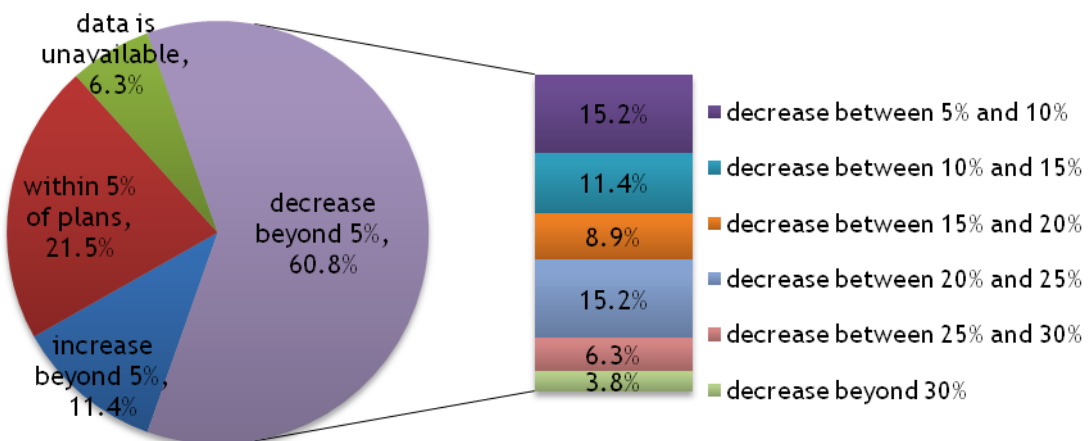
*Since September 1, 2008, have you seen a significant deviation from plans/budgets/expectations for self-produced ticket sales, as measured by numbers of people attending?*



## Individual Donations

The 91 respondents who completed the survey were asked the following question:

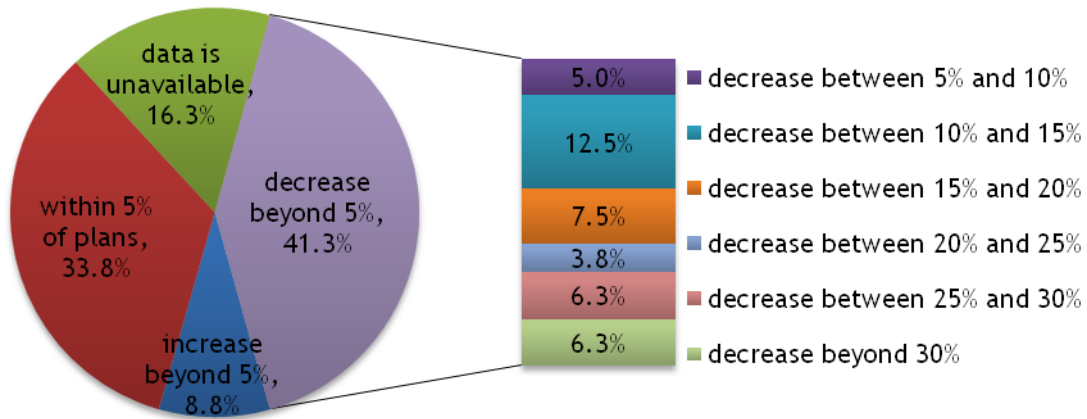
*Have you seen any deviation from plans/budgets/expectations in terms of individual donations since September 1, 2008?*



## Foundation Support

The 91 respondents who completed the survey were asked the following question:

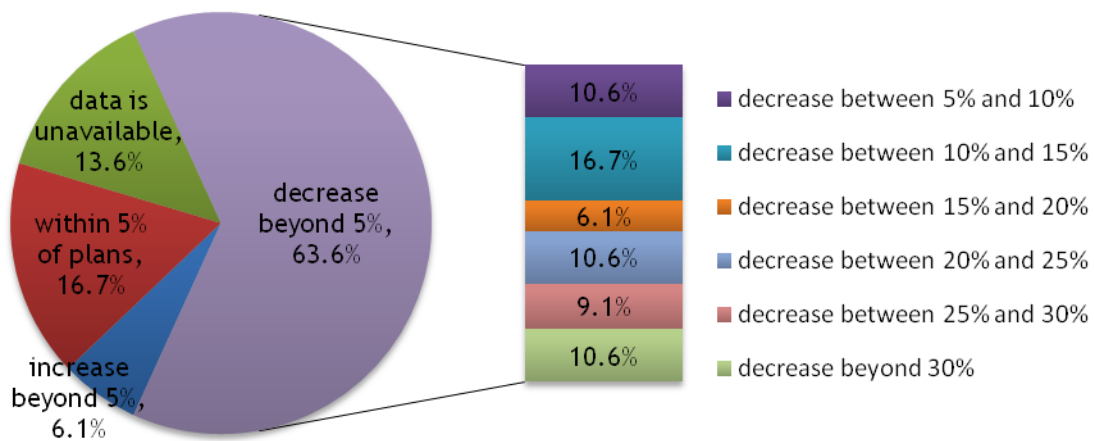
*Have you seen any deviation from plans/budgets/expectations in terms of foundation support since September 1, 2008?*



## Corporate Support

The 91 respondents who completed the survey were asked the following question:

*Have you seen any deviation from plans/budgets/expectations in terms of corporate support since September 1, 2008?*



## Changes In Current Season

The 91 respondents who completed the survey were given the opportunity to choose from a list some of the ways in which dance-based entities have been making operational changes in the current season. They were asked to respond to the following prompt:

*Which, if any, of the following actions have you taken since September 1, 2008 to address the current economic situation for this season (beginning September 1, 2008 and ending August 31, 2009)? (Please check all that apply.)*

